



202 Chapel Ridge Road
Pauls Valley, OK 73075



(405) 238-5100

chapelridgepaulsvalley.com

A Great Place To Call Home!

Community Amenities

- Fitness Center
- Swimming Pool
- Clubhouse
- Professionally Landscaped Grounds
- 5 Play Grounds
- On-Site Parking
- Indoor and Outdoor Basketball Court
- On-Site Clothes Care Center
- We are a Pet-Friendly Community**
- Next Door to Paul's Valley General Hospital

*In select units

**Restrictions may apply

Apartment Features

- Full Size Washer/Dryer Connections
- Ceiling Fans
- Refrigerator
- Dishwasher
- Disposal
- Private Patio/Balcony*
- Walk-In Closets
- Extra Storage
- Range/Oven
- Plush Carpet*
- Plank Flooring*
- Cable/Internet Ready
- Heat/Air Conditioning
- Window Coverings
- 1, 2 and 3 Bedroom Floor Plans
- Tub/Shower
- Separate Dining Rooms
- Fireplace*
- Updated and Remodeled Units*

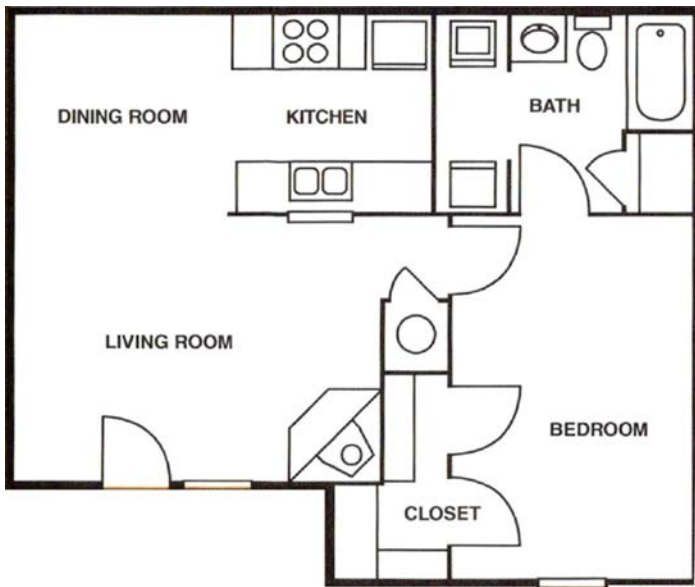
Now Leasing 1, 2, and 3 Bedroom Floor Plans

Professionally Managed by

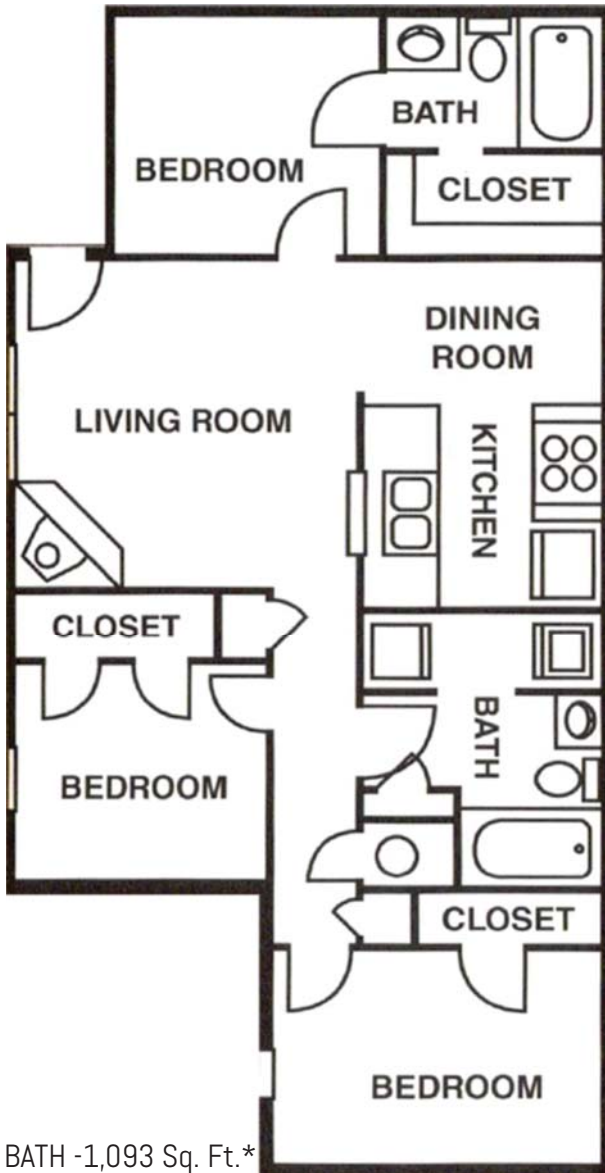
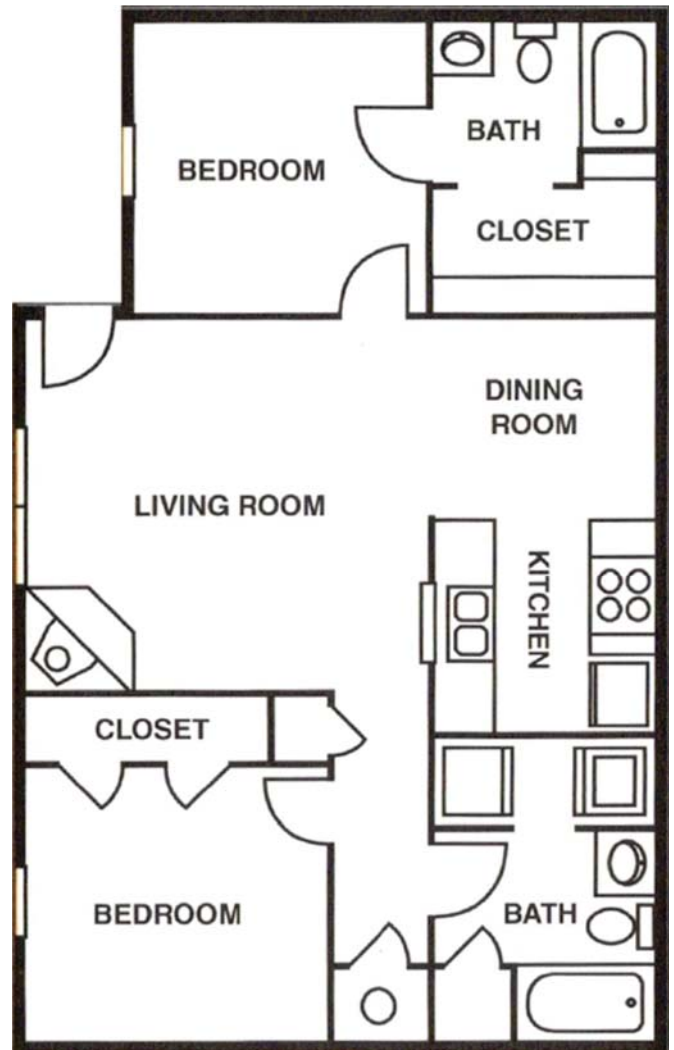
VICKERY
Development, INC.



1 BED/1 BATH -674 Sq. Ft.*



2 BED/2 BATH -937 Sq. Ft.*



3 BED/2 BATH -1,093 Sq. Ft.*



202 Chapel Ridge Road
Pauls Valley, OK 73075

*Approximate Square Footage Only.